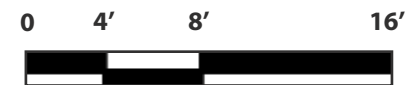


**FOR PRINT SIZE 11" X 17"**

SCALE 1/8" = 1'-0"



**TENANT DATA**

100 OAK TREE INTERACTIVE	+/- 1784 sq.ft.
BEAL BANK	+/- 517 sq. ft.

**GLA +/- 2301sq.ft.**

**COMMON AREA**

CONFERENCE ROOM	+/- 348 sq.ft.
KITCHEN	+/- 289 sq. ft.

**GLA +/- 637 sq.ft.**

**TOTAL GLA +/- 2938 sq.ft.**

# 2000 Crestwood Boulevard • first floor

Irondale, AL 35216

## Collateral Properties

1900 Crestwood Blvd., Suite 300 • Irondale, AL 35210

**Tom Coggin**

205-951-1015

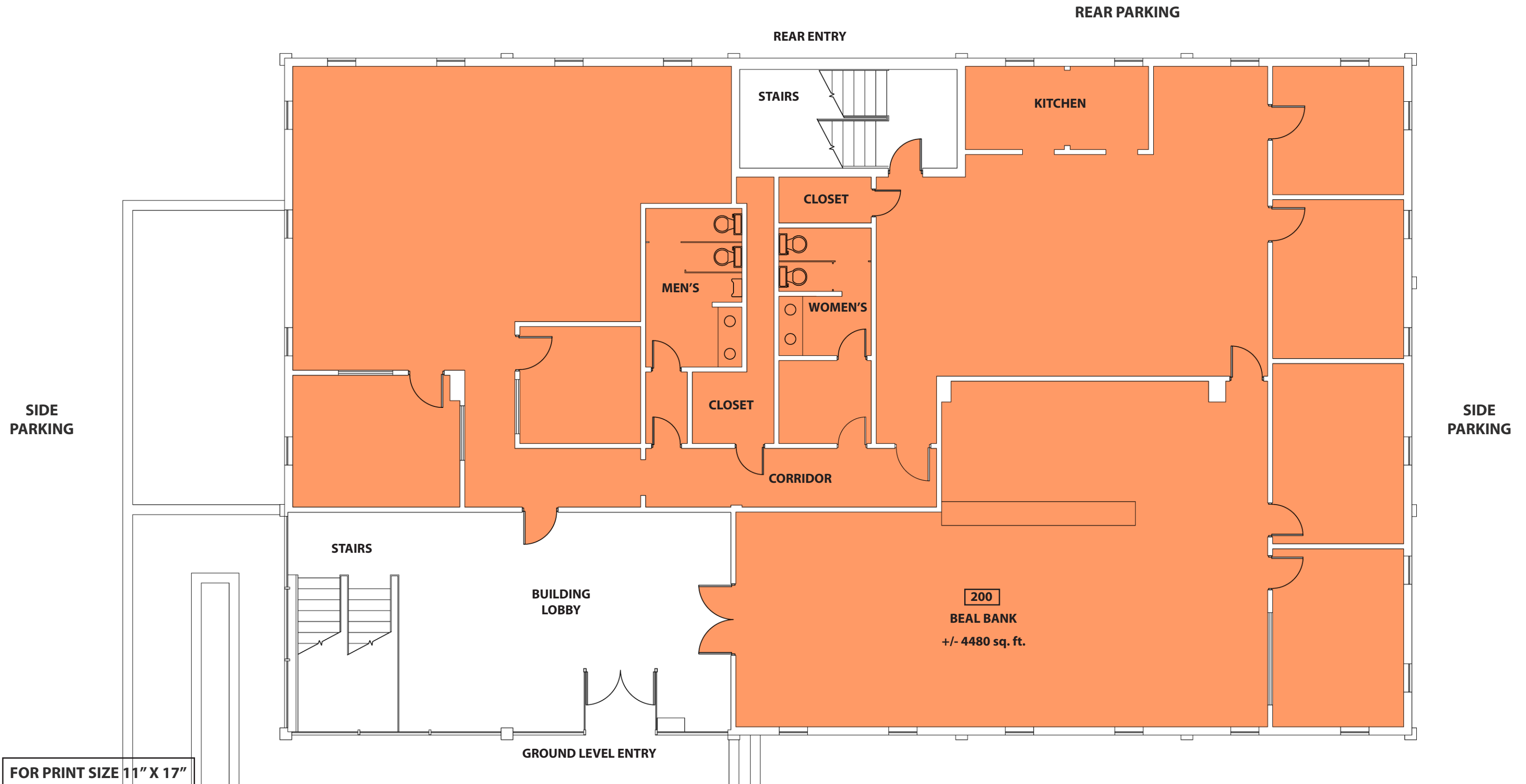
tcoggin@collateralproperties.com

**Bryan Ratliff**

205-951-4488

bratliff@collateralproperties.com

No warranty or representation, expressed or implied, is made as to the accuracy of the information contained herein. Such information is submitted subject to change in price, errors, omission, and withdrawal with out prior notice. **This document is not for construction purposes.**



FOR PRINT SIZE 11" X 17"

SCALE 1/8" = 1'-0"



TENANT DATA

200 BEAL BANK	+/- 4480 sq. ft.
<b>TOTAL GLA</b>	<b>+/- 4480 sq.ft.</b>

# 2000 Crestwood Boulevard • second floor

Irondale, AL 35216

## Collateral Properties

1900 Crestwood Blvd., Suite 300 • Irondale, AL 35210

**Tom Coggin**

205-951-1015

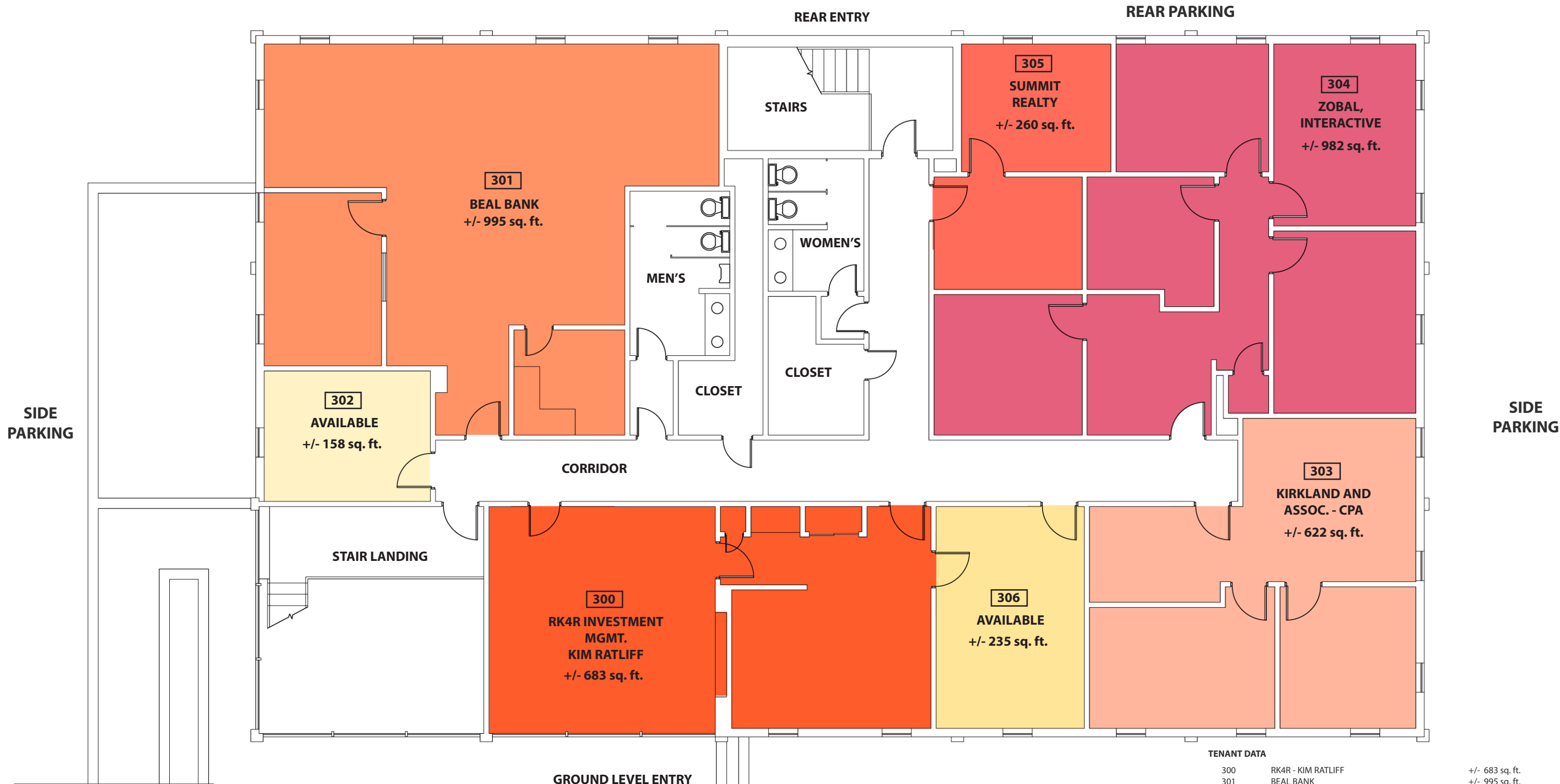
tcoggin@collateralproperties.com

**Bryan Ratliff**

205-951-4488

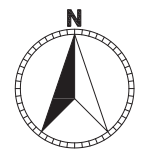
bratliff@collateralproperties.com

No warranty or representation, expressed or implied, is made as to the accuracy of the information contained herein. Such information is submitted subject to change in price, errors, omission, and withdrawal with out prior notice. **This document is not for construction purposes.**



FOR PRINT SIZE 11" X 17"

SCALE 1/8" = 1'-0"



TENANT DATA		
300	RK4R - KIM RATLIFF	+/- 683 sq. ft.
301	BEAL BANK	+/- 995 sq. ft.
303	KIRKLAND AND ASSOC. - CPA	+/- 622 sq. ft.
304	ZOBAL INTERACTIVE	+/- 982 sq. ft.
305	SUMMIT REALTY	+/- 260 sq. ft.
AVAILABLE SPACE		GLA +/- 3542 sq.ft.
302	AVAILABLE	+/- 158 sq. ft.
306	AVAILABLE	+/- 235 sq. ft.
		GLA +/- 393 sq.ft.
		TOAL GLA +/- 3935 sq.ft.

**2000 Crestwood Boulevard • third floor**  
 Irondale, AL 35216

**Collateral Properties**  
 1900 Crestwood Blvd., Suite 300 • Irondale, AL 35210

**Tom Coggin**  
 205-951-1015  
 tcoggin@collateralproperties.com

**Bryan Ratliff**  
 205-951-4488  
 bratliff@collateralproperties.com

No warranty or representation, expressed or implied, is made as to the accuracy of the information contained herein. Such information is submitted subject to change in price, errors, omission, and withdrawal with out prior notice. **This document is not for construction purposes.**