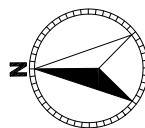
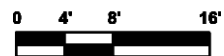


FOR PRINT SIZE 11" X 17"

SCALE 1/16" = 1'-0"



TENANT DATA

100	ALWAYS THERE	+/- 3304 sq. ft.
110	DR. ROBERT HOLMES	+/- 2124 sq. ft.
111	ASHLEY BRUETTE - NATIONWIDE	+/- 464 sq. ft.
TOTAL GLA		+/- 5892 sq.ft.

Lorna Professional Building • first floor

Birmingham, AL 35216

Collateral Properties

1900 Crestwood Blvd., Suite 300 • Irondale, AL 35210

Tom Coggin

205-951-1015

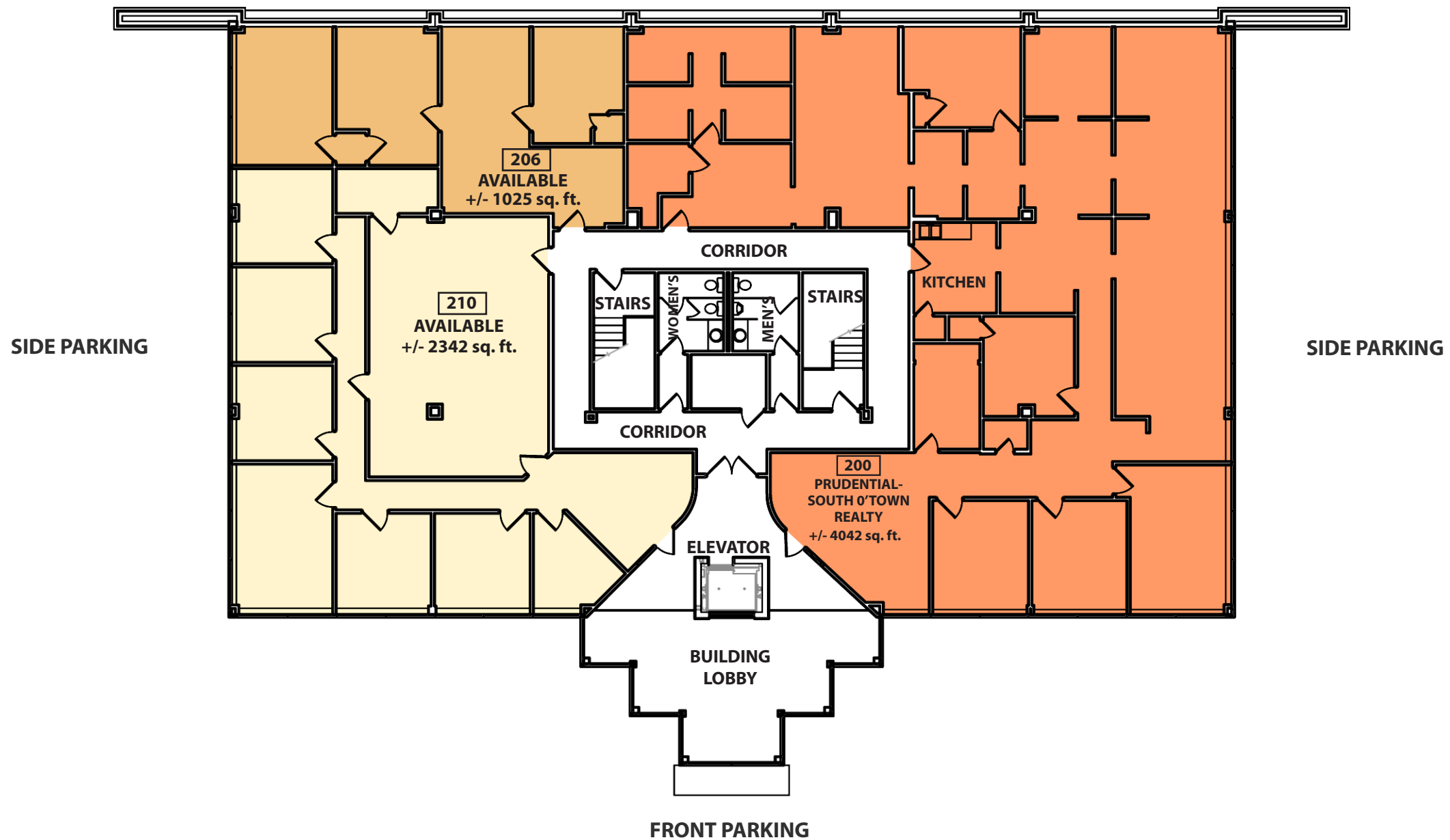
tcoggin@collateralproperties.com

Bryan Ratliff

205-951-4488

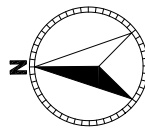
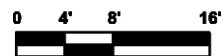
bratliff@collateralproperties.com

No warranty or representation, expressed or implied, is made as to the accuracy of the information contained herein. Such information is submitted subject to change in price, errors, omission, and withdrawal with out prior notice. **This document is not for construction purposes.**



FOR PRINT SIZE 11" X 17"

SCALE 1/16" = 1'-0"



TENANT DATA

200 PRUDENTIAL - SOUTH O'TOWN REALTY +/- 4042 sq. ft.

AVAILABLE SPACE **GLA** +/- 4042 sq.ft.

206 AVAILABLE +/- 1025 sq. ft.

210 AVAILABLE +/- 2342 sq. ft.

GLA +/- 3367 sq.ft.

TOTAL GLA +/- 7409 sq.ft.

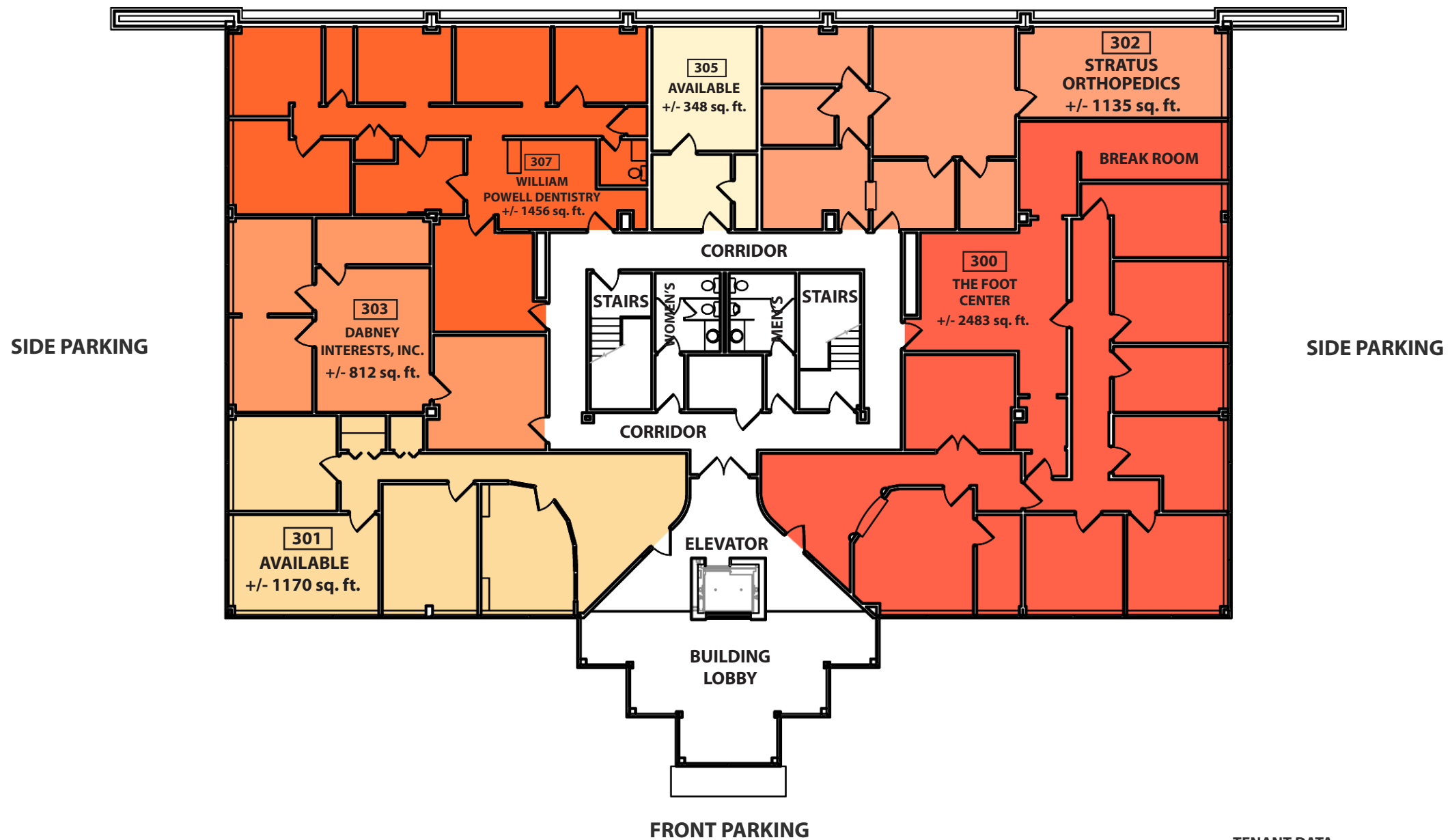
Lorna Professional Building • second floor
Birmingham, AL 35216

Collateral Properties
1900 Crestwood Blvd., Suite 300 • Irondale, AL 35210

Tom Coggin
205-951-1015
tcoggin@collateralproperties.com

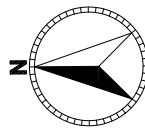
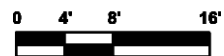
Bryan Ratliff
205-951-4488
bratliff@collateralproperties.com

No warranty or representation, expressed or implied, is made as to the accuracy of the information contained herein. Such information is submitted subject to change in price, errors, omission, and withdrawal with out prior notice. **This document is not for construction purposes.**



FOR PRINT SIZE 11" X 17"

SCALE 1/16" = 1'-0"



TENANT DATA

300	THE FOOT CENTER	+/- 2483 sq. ft.
302	STRATUS ORTHOPEDICS	+/- 1135 sq. ft.
303	DABNEY INTERESTS, INC.	+/- 812 sq. ft.
307	WILLIAM POWELL DENTISTRY	+/- 1456 sq. ft.

AVAILABLE SPACE

	GLA	+/- 5886 sq.ft.
301 AVAILABLE		+/- 1170 sq. ft.
305 AVAILABLE		+/- 348 sq. ft.
	GLA	+/- 1518 sq.ft.
	TOTAL GLA	+/- 7404 sq.ft.

Lorna Professional Building • third floor
Birmingham, AL 35216

Collateral Properties
1900 Crestwood Blvd., Suite 300 • Irondale, AL 35210

Tom Coggin
205-951-1015
tcoggin@collateralproperties.com

Bryan Ratliff
205-951-4488
bratliff@collateralproperties.com

No warranty or representation, expressed or implied, is made as to the accuracy of the information contained herein. Such information is submitted subject to change in price, errors, omission, and withdrawal with out prior notice. **This document is not for construction purposes.**